

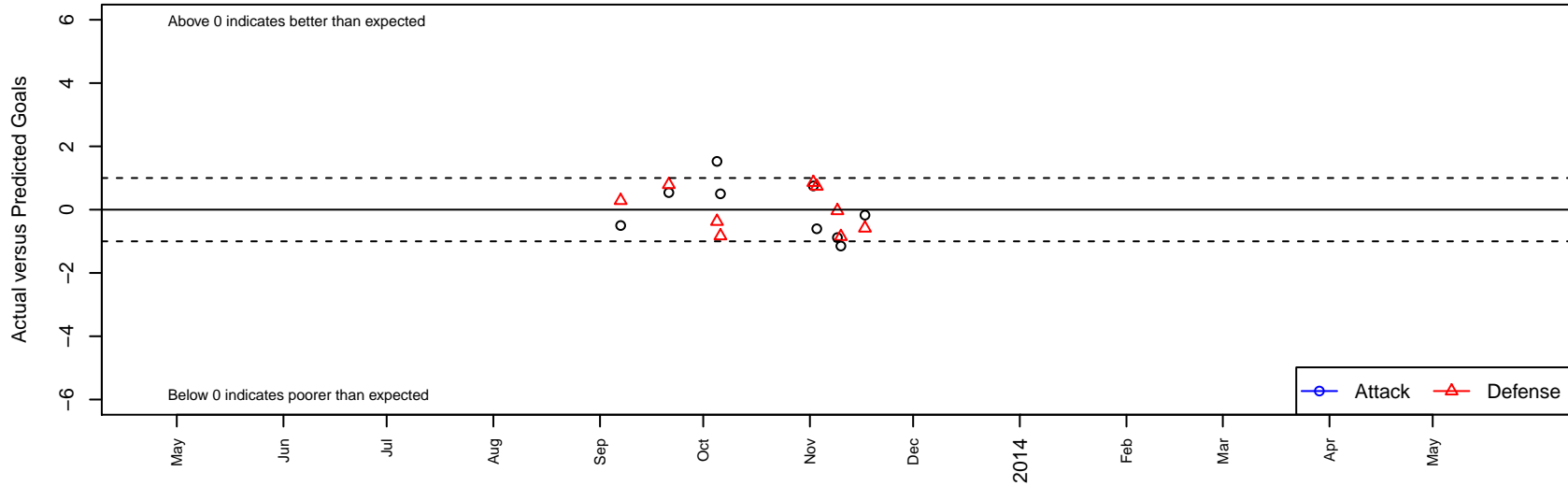
# Peninsula Velocity Blue G02

, CAN  
 G02 total strength=889  
 attack=1.69 defense=1.1  
 alt names used:  
 Peninsula Youth Soccer Club Velocity Blue

Venues played:  
 NorCal Premier F11 1 – Region 2–3–4 U11



**Peninsula Velocity Blue G02**  
 Dots are actual minus expected GF (blue circles) and GA (red triangles).  
 Blue line is smoothed change in attack strength. Red is smoothed change in defense strength.



	<b>date</b>	<b>home</b>		<b>away</b>		<b>venue</b>	<b>pred.home</b>	<b>pred.away</b>
2845	2013-11-17	Peninsula Velocity Blue G02	1	SRU Thunder G02	3	NorCal Premier FI1 1 – Region 2-3-4 U11	1.17	2.41
2735	2013-11-10	Peninsula Velocity Blue G02	1	Mustang Fusion G02	2	NorCal Premier FI1 1 – Region 2-3-4 U11	2.15	1.15
2660	2013-11-09	Peninsula Velocity Blue G02	0	West Valley Magic Maroon G02	2	NorCal Premier FI1 1 – Region 2-3-4 U11	0.88	1.97
2607	2013-11-03	West Coast SC Fury G02	1	Peninsula Velocity Blue G02	1	NorCal Premier FI1 1 – Region 2-3-4 U11	1.74	1.60
2516	2013-11-02	Peninsula Velocity Blue G02	3	Pleasanton Rage Orange G02	0	NorCal Premier FI1 1 – Region 2-3-4 U11	2.25	0.86
1996	2013-10-06	EBU Bay Oaks Strykers G02	2	Peninsula Velocity Blue G02	3	NorCal Premier FI1 1 – Region 2-3-4 U11	1.17	2.50
1886	2013-10-05	Peninsula Velocity Blue G02	4	Livermore Fusion SC Maroon G02	2	NorCal Premier FI1 1 – Region 2-3-4 U11	2.47	1.63
1567	2013-09-21	Mill Valley SC 03 Rockers G02	0	Peninsula Velocity Blue G02	2	NorCal Premier FI1 1 – Region 2-3-4 U11	0.79	1.46
1227	2013-09-07	FC Milpitas MXG G02	1	Peninsula Velocity Blue G02	1	NorCal Premier FI1 1 – Region 2-3-4 U11	1.29	1.50